

Fanconi syndrome associated with the use of Tenofovir Treatment in a Patient with Hepatitis B Virus Infection: Reporting a Case

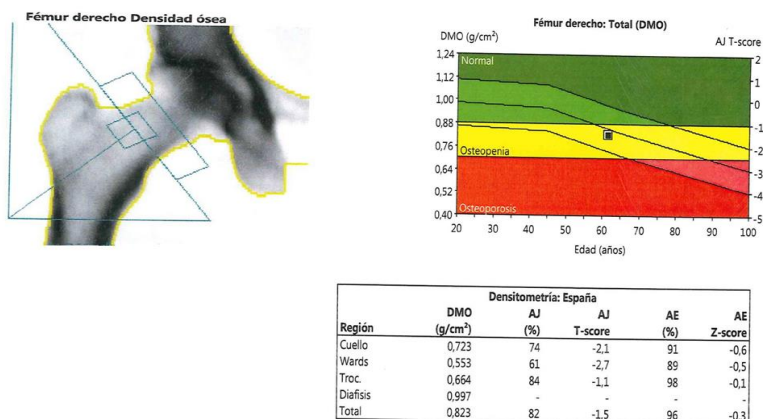
Alejandro Jose Rosales Montero*, Alvarado Gutierrez Raul and Tura Rosales David
Department of Nephrology, Regional Hospital of Manacor, Balearic Islands, Spain
Corresponding author: Alejandro Jose Rosales Montero, Department of Nephrology, Regional Hospital of Manacor, Balearic Islands, Spain, E-mail: alejandrordriguez25998@gmail.com
Received date: January 09, 2024, Manuscript No. IPJCEN-24-18545; **Editor assigned date:** January 12, 2023, PreQC No. IPJCEN-24-18545 (PQ); **Reviewed date:** January 26, 2024, QC No. IPJCEN-24-18545; **Revised date:** February 02, 2024, Manuscript No. IPJCEN-24-18545 (R); **Published date:** February 09, 2024, DOI: 10.36648/2472-5056.9.1.230
Citation: Montero AJR, Raul AG, David TR (2024) Fanconi syndrome associated with the use of Tenofovir Treatment in a Patient with Hepatitis B Virus Infection: Reporting a Case. J Clin Exp Nephrol Vol.9 No.1: 230.

Supplementary Data

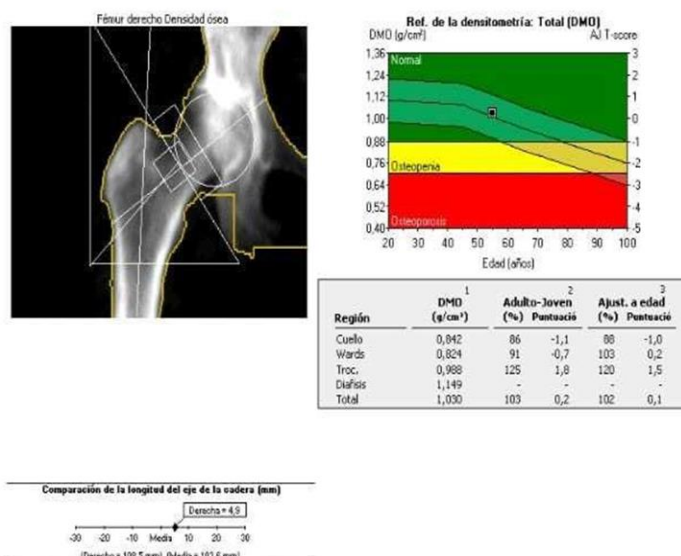
Supplementary Table 1: Analytical parameters presented by the patient 24 months before and 6 months before the first consultation visit and subsequently at 6 months and 24 months in the subsequent visits after TDF suspension and treatment of the different hydroelectrolyte alterations and bone metabolism mineral (phosphorus).

	Reference values in our hospital laboratory	24 months before tenofovir discontinuation	6 months before tenofovir discontinuation	At the first visit to our office	6 months after the first visit and start of treatment with oral sodium bicarbonate and oral supplements of calcium, phosphorus and potassium
Cr, mg/dl in serum	0.60-1.10	1.16	1.3	1.33	1.04
K mEq/l in serum	3.5-5.1	3.4	3.1	2.7	3.7
pH in serum	7.33-7.43		7.16	7.18	7.34
HCO3 mmol/L in serum	23-27		17.4	18.9	24.2
FA, U/L in serum	35-104	20.8	188	187	57

Urato, mg/dl in serum	2.6-6.0	1.4	1.5	1.3	2.4
P, mg/dl in serum	2.5-4.5	1.2	1.6	1.4	2.9
Mg, mg/dl in serum	1.60-2.60	1.5	1.4	1.4	2
PTH, pg/ml in serum		10.8	10	10.5	35
TPR%	>90%	65	64	65	75
Uric acid mg in 24-hr urine	250-750			800	760
K mEq in 24-hr urine	25-125			130	79
P mg in 24- hr urine	400-1.300			2265	1850
Proteinuria mg in 24-hr urine	400-1.300			1344.76	590
Albumin mg in 24-hr urine	<30			374.6	164.7
Magnesium mg in 24-hr urine	72.9-121.5			123.5	86
Glucose mg in 24-hr urine	0-500			10989	5840
Note: Cr: Creatinine; FA: Alkaline phosphatase; PTH: Parathyroid Hormone; P: Phosphorus mg/dl; TPR: Tubular Phosphate Reabsorption Percentage					



Supplementary Image 1: Bone densitometry.



Supplementary Image 2: (Bone densitometry) after 6 months of tenofvir suspension and treatment with oral sodium bicarbonate and oral calcium, phosphorus and potassium supplements.