

Title: Homology Modelling of Lycopene Cleavage Oxygenase: The Key Enzyme of Bixin Production

(Author's Name) Junichi Takeno

(Affiliation: Department, University, Country)

President of Heuristics Science Research Institute, Japan



Abstract: (Up to 500-600 Words).

Bixin is a natural dye and a high commercial important compound, produced from Bixin synthetic pathway in case of Bixa orellana plant. The particular enzyme Lycopene cleavage Oxygenase catalyzes the first step of reaction pathways from Trans-lycopene to Bixin synthesis. The 3D structure of the enzyme was predicted by MODELLER program and the missing side chains were verified by SCRWL4 tool. Model validation was done by using the output of PROCHECK and DOPE score.

pore cus dolo doluptatem ut restrum nosam fugiaec aepedis qui repelit as mo opta dellum reici doleste dit pa num ipictiundel il id et andaecate nobis quas num rem ad et ex experspide necae sant et fugiatio et esse vendel imus, sincto in cus aceprem porehenti acest, sediscius cum quodi qui vendae porerae exped estecum quia dolupta tatur, senis expedit ipicia dempel modis quas ium volorum ducia quist, consed quas di comnimus acestiam volupit inction non natem volum fuga. Nequia volorumquunt que si rem verum volor aut es minci volor aut estota nosantia conse aut inimus aut dipsus ipsunt doluptio. Nequostemo vel maximo quo ius.

quodit aut vitas a consequi nobita sam quam veligenecae et hario. Officid ioriat voloratem aut vellend pe rest eos et es eos

Figures/ Images/ Graphs/ Table (both Color and BW) if any

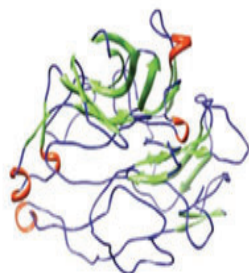


Figure 1: The final considered model from Modeller output (Visualization by Chimera).

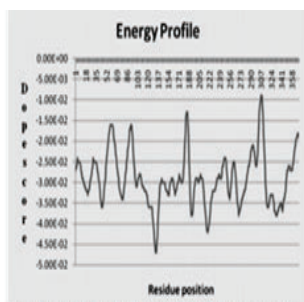


Figure 2: Analysis of the DOPE score profile of the model obtained from Modeller.

Importance of Research: (Up 200 Words)

Annatto (*Bixa orellana* L.) plant contains pigment contains bixin and norbixin, valuable natural colorants (Rodrigues et al., 2007). These pigments are widely used for industrial food and beverages, cosmetics, and as natural dyes for textiles (Chattopadhyay et al., 2008). *Bixa orellana* seed extracts also lowers blood glucose level by stimulating peripheral utilization of glucose so the seed might be of pharmacological importance (Russell et al., 2008). The natural dye bixin is extracted from the seed of the annatto plant and widely used as food colorant. Many restrictions are on the use of synthetic additives in the food industry as the synthetic dye having adverse effect but the investigation on biochemical properties of *Bixa orellana* plants and seed extracts has proven that it is having tumour inhibiting capacity (Reddy et al., 2005).

Keywords: Bixin, Homology Modelling, Docking, RC Plot

References: (15-20 References hyperlinked with Respective Publisher)

1. Altschul SF, Gish W, Miller W, Myers EW, Lipman DJ (1990) Basic local alignment search tool J Mol Biol 215: 403-410.
2. Bouvier F, Suire C, Mutterer J, Camara B (2003) Oxidative remodelling of chromoplast carotenoids: identification of the carotenoid dioxygenase CsC-CD and CsZCD genes involved in *Crocus* secondary metabolite biogenesis Plant Cell 15: 47-62.
3. Chattopadhyay P, Chatterjee S, Sen SK (2008) Biotechnological potential of natural food grade biocolorants African Journal of Biotechnology 7: 2972-2985.
4. Caspi R, Altman T, Dale JM, Dreher K, Fulcher CA, et al. (2010) The MetaCyc database of metabolic pathways and enzymes and the BioCyc collection

of pathway/genome databases. *Nucleic Acids Res* 38: 473-479.

5. Kloer DP, Ruch S, Al-Babili S, Beyer P, Schulz GE (2005) The structure of a retinal-forming carotenoid oxygenase. *Science* 308: 267.

6. Altschul SE, Gish W, Miller W, Myers EW, Lipman DJ (1990) Basic local alignment search tool *J Mol Biol* 215: 403-410.

7. Bouvier F, Suire C, Mutterer J, Camara B (2003) Oxidative remodelling of chromoplast carotenoids: identification of the carotenoid dioxygenase CsCCD and CsZCD genes involved in Crocus secondary metabolite biogenesis *Plant Cell* 15: 47-62.

8. Chattopadhyay P, Chatterjee S, Sen SK (2008) Biotechnological potential of natural food grade biocolo-

rants *African Journal of Biotechnology* 7: 2972-2985.

9. Caspi R, Altman T, Dale JM, Dreher K, Fulcher CA, et al. (2010) The MetaCyc database of metabolic pathways and enzymes and the BioCyc collection

Biography: (Up to 200 words)

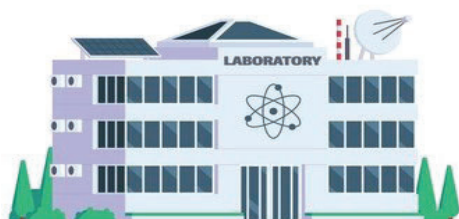
John has completed his PhD from Oxford University. He is the Head of the department of Biology and dean of a premier research institute. He has published more than 35 papers in reputed journals and has been serving as an editorial board member of reputed journals.

**Author Information
(Presenting Author)**

Name	
University/Organization	
Position/Designation	
Contact Details	
Category of submission	
Research Interest:	

**Information of Author's research
centre/ Laboratory**

Research centre/ Laboratory	
On-going Research Projects	
Contact Details	
About Research centre/ Laboratory	



Author's Laboratory/Research centre's Logo



Author's University/Organization's Logo

*Let Nobel Thoughts comes from all
direction...
Global Platform for Beautiful Minds,
scientists, researchers...*

*Awards for
best research paper, best Speaker, best Young
researcher.
Special Recognition:
For Women scientists and students.*

NOTE: This is a sample Abstracts. Conference/Journal name will be changed while publishing respective abstract in supporting journal website.