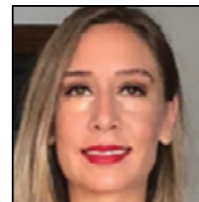


The outcomes of team approaches for the treatment of patients with cleft lip and palate

Ege Dogan and Servet Dogan

Private Clinic, Turkey



Abstract

Aim: Cleft Lip and Palate (CLP) is the most seen congenital anomaly, observed in the orofacial area. Patients with CLP have many problems starting from birth, so the treatment begins with birth until the patient becomes an adult. CLP causes several functional and esthetic problems due to its structure affecting both hard and soft tissues involving nose, lips, alveolus and palate. A multidisciplinary treatment approach is required for these patients. The purpose of this study is to evaluate the outcomes of the effect of team treatment approaches of CLP.

Material and Method: Cleft patients need interdisciplinary treatment approaches. In this study, the treatment of the patients with CLP is presented by the help of team approaches. There are different treatment approaches in each period. The treatment approaches in the patients in infant period (0-12 months), in deciduous dentition period (1-5 years), in mixed dentition period (5-13 years), in permanent dentition period (13-18 years) and in adult period (after 18 years old) were presented.

Results: This study shows the necessity of multidisciplinary treatment in patients with cleft lip and palate. Improvement of the aesthetic, function and phonation of the patient has been observed with through the therapy performed. In every dental period; newborn, deciduous, mixed, permanent and adult, orthodontics have different treatment approaches. The success in cleft patients depends on certainly using the appropriate treatment method in each discipline with the correct sequence and to work in coordination as a team

Biography

Ege Dogan DDS PhD, had finished the dentistry faculty with the thesis named 'The evaluation of the patients with cleft in Aegean Region in Turkey between the years 2000-2011' in Ege University, Faculty of Dentistry, Izmir, Turkey. She did her PhD with the thesis named 'The Evaluation of Soft and Hard Tissues by Using Alt-RAMEC Protocol for Maxillary Protraction in Patients with Unilateral Cleft Lip and Palate' in Ege University, Faculty of Dentistry, Department of Orthodontics, Izmir, Turkey. Now she is working in her private clinic in Izmir, Turkey.

Publications

1. Taylor M, Hans MG, Strohl KP, Nelson S, Broadbent BH. Soft tissue growth of the oropharynx. Angle Orthod 1996;66:393-400.
2. Claudino LV, Mattos CT, Ruellas AC, Sant' Anna EF. Pharyngeal airway characterization in adolescents related to facial skeletal pattern: A preliminary study. Am J Orthod Dentofacial Orthop 2013;143:799-809.
3. Chokotiya H, Banthia A, K SR, Choudhary K, Sharma P, Awasthi N. A study on the evaluation of pharyngeal size in different skeletal patterns: A radiographic study. J Contemp Dent Pract 2018;19:1278-83.
4. Lenza MG, Lenza MM, Dalstra M, Melsen B, Cattaneo PM. An analysis of different approaches to the assessment of upper airway morphology: A CBCT study. Orthod Craniofac Res 2010;13:96-105.
5. Shokri A, Miresmaeili A, Ahmadi A, Amini P, Falah-Kooshki S. Comparison of pharyngeal airway volume in different skeletal facial patterns using cone beam computed tomography. J Clin Exp Dent 2018;1:1017-28.

[Annual Dentistry and Dental Sciences Congress](#) | Edinburgh, Scotland, March 2-3, 2020

Citation: Ege Dogan, The outcomes of team approaches for the treatment of patients with cleft lip and palate. Dentistry 2020, Annual Dentistry and Dental Sciences Congress, Edinburgh, Scotland, March 2-3, 2020,135